

## Characteristics and Typical Components

**AEMO® dispensers guarantee very precise dosing and high repeatability. As a result of these qualities NEMO® dispensers are being used for various applications in the cosmetic industry, in the chemical industry, in the production of consumer goods or industrial goods, electrical equipment or electronic packaging.**

非常精确的流量精度和高重复性。由于这些品质，AEMO 计量泵被用于各种应用：化妆品行业、化工行业，生产消费品和工业产品、电气设备或电子产品装备与包装。

### AEMO® Dispenser Characteristics 计量特征：

NEMO® dispensers are mainly used for media with the following properties:

#### 应用领域：

- Capacity proportional to the speed of drive  
流量与转速成正比例关系
- Dosing accuracy  $\pm 1\%$  volumetric  
体积流量计量精度 $\pm 1\%$
- Versatile use in applications that require robotics and servo technology  
多功能应用在要求机器人和伺服技术
- Valve free dosing method  
无单向阀式计量，避免了单向阀的相关问题
- Optional heating  
可选的加热
- Perfect for shear sensitive products, such as media with micro balloons  
适合剪切敏感产品,如细微颗粒 性产品

### Media Characteristics 介质特征：

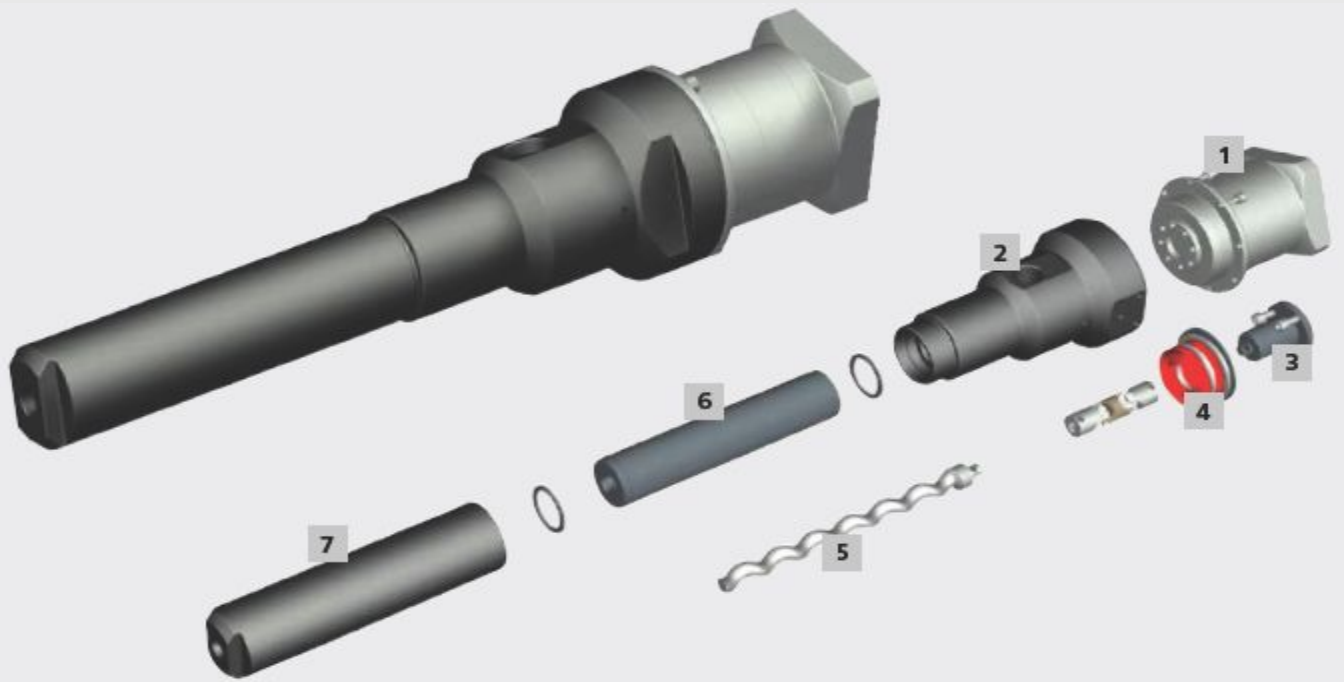
- Low to very high viscosity  
低或高粘度
- Abrasive media  
磨损腐蚀性介质
- Anaerobic media  
厌氧介质
- Shear and pressure sensitive Dot- and bead application  
剪切敏感性介质，压力敏感性介质
- Suitable for all adhesives and sealants  
颗粒介质，粘胶，密封胶等
- Excellent for casting applications  
Suitable for all kinds of solvents and soldering paste  
优异的成型功能，用于各种溶剂和固化剂浆料

### Large Range of Capacities

#### 流量范围：

- Capacities between approximately 0.2 ~4,0 ml/rev~ 9 ml/rev.





### 1. Drive 驱动

Planetary gear with re-inforced bearing

### 2. Pump Housing 泵壳

Manufactured from aluminium

### 3. Drive Shaft 传动轴

With robust bearing for precise true-running of shaft

### 4. Shaft Sealing 密封

Twin lip seal for highest vacuum pressure load

### 5. Rotor 转子

In wear and corrosion resistant versions

### 6. Stator 定子

In various qualities for highest durability and abrasion resistance

### 7. End connection 连接

Manufactured from aluminium

### Advantages

- Very gentle conveyance
- Pulsation free
- Compact design for easy installation in robotic application
- Gentle conveyance of media containing solids
- No dripping or thread-pulling
- Conveyance is independent of temperature and viscosity

## AEMO® Performance Parameters

性能参数表:

AEMO® Dosing	ADP04	ADP06	ADP08	ADP10
单转排量 Dosing volume ml/rev	~ 0.18	~ 1	~ 2	~ 4
最小流量 Min. dosing quantity ml*	0.075	0.25	0.5	1
定子材质 Stator materials	NBR, EPDM, Viton, PTFE25%GF, (FDA Grades available)			
流量范围 Flow rate ml/min*	2 – 36	6 – 200	13 – 400	26 – 800
最大转速 Max. dispense speed	200 rpm*			
温度范围 Operating temperature	up to +248 °F /+120 °C			
最大压力 Max. back pressure	up to 450 psi/30 bar*			
最大入口压力 Max. inlet pressure	145 psi/10 bar			
重量-含减速机 Weight incl. gearbox	ca. 5.9 lbs/2.7 kg~ca.7.2 lbs/3.3 kg			

\*depending on product 决定于具体介质

### AEMO® Dispenser NDP0400-04



### AEMO® Dispenser NDP0600-03



### AEMO® Dispenser NDP0800-03



### AEMO® Dispenser NDP1000-03

